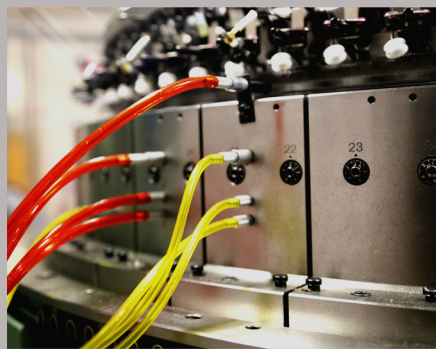
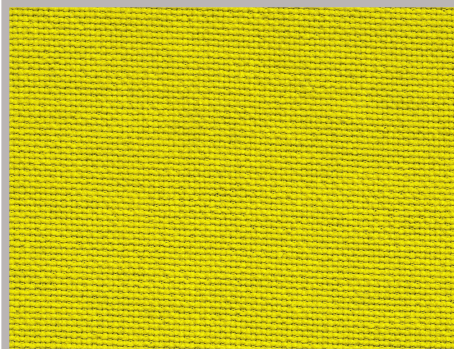


**MXC-  
RS3.2DF**

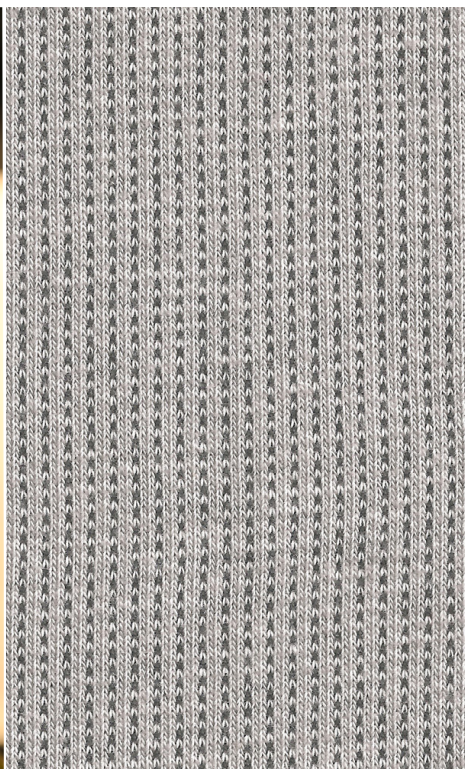
**SINGLE KNIT  
MACHINE**



**HIGH SPEED SINGLE KNIT THREE END FLEECE  
MACHINE.**



monarch



## Standard Specifications

**Diameter** 26" 30" 32" 34" 36"

**No of Feeds** 84, 96, 104, 108, 116

**Gauge** 14G - 32G

**Frame** MXC frame - single bed for high speed operation

**Yarn Feed Device** Memminger MPF-20LI (1 U/F)

**Cylinder Cams** 3-race closed cam system

**Sinker Cams** Double push type, segmented sinker cap

**Lubricator** Uniwave Projectile 419

**Take-up** ACT -7 servo motor controlled friction roll system (Maximum roll diameter 580mm)

**Auxiliary Equipment** FCP-60 machine control panel, Flutter blower with speed control, Tape cleaning blower

## Fabric Potential

- 1x1 Fleece, 2x1 Twill Fleece 3x1 Fleece (3-race)
- With optional parts: Pique fleece, Mesh Fleece, 3x2 Twill Fleece (4-race), Elastomeric yarn plated double fleece

## Special Features

- Fine plating double fleece knit machine
- Quick conversion to knit fabrics other than double fleece
- ACT-7 servo motor-driven auto take-up unit installed
- Equipped for MMS monitoring

## Optional Extras

- OD5 open width take up
- Large take-up on high legs (Maximum fabric roll diameter 850mm)
- Parts for elastomeric plating
- Additional cams for 4 track structures
- Parts for pique fleece
- Parts for mesh fleece
- Cams for loose stitch density
- Pulsonic oiler
- Yarn length meter
- Auto oiler and auto blowing
- Two door specification
- Double handle specification

Monarch Knitting Machinery UK Ltd, Boston Road, Beaumont Leys, Leicester LE4 1BG, England  
Tel: (0116) 235 1502. Fax: (0116) 236 7201 Email: [general@monarchknitting.co.uk](mailto:general@monarchknitting.co.uk)

[www.monarchknitting.co.uk](http://www.monarchknitting.co.uk)

*\*The above specification may be changed without notice. \*Conditions of sales may vary from country to country. \* All information in this brochure is given in good faith but without warranty.*