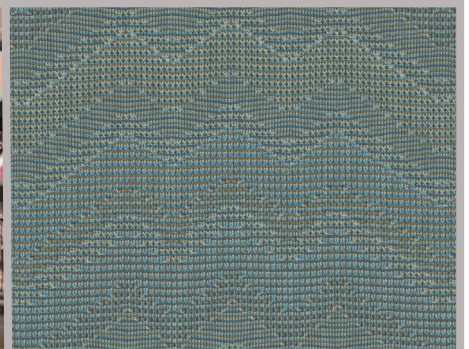
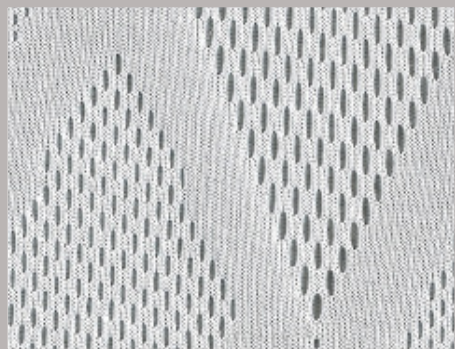


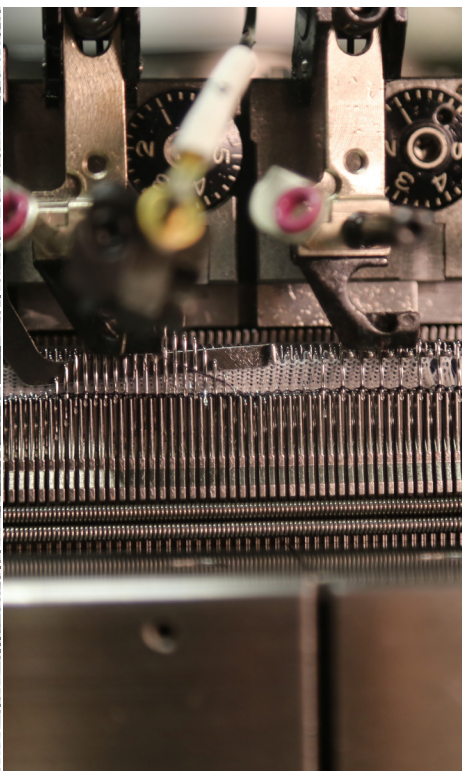
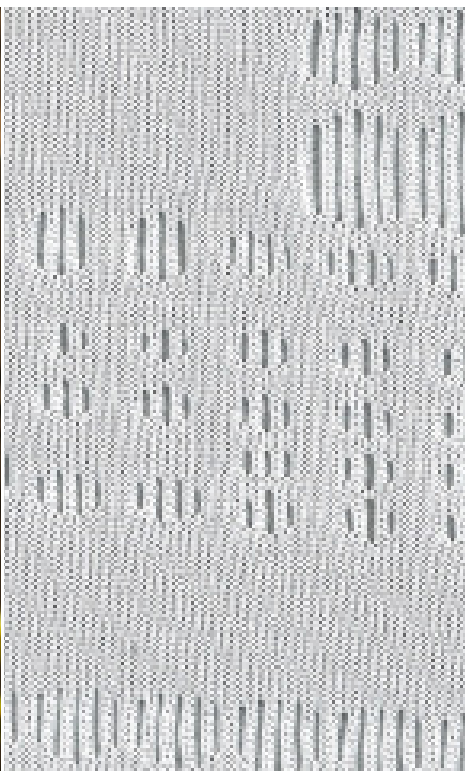
# M-LEC7BS

ELECTRONIC  
DOUBLE KNIT  
MACHINE



**DOUBLE-KNIT ELECTRONIC JACQUARD MACHINE  
WITH 3 POSITION NEEDLE SELECTION.**





## Standard Specifications

**Diameter** 30" 34" 36" 38"  
**No of feeds** 72, 76, 80, 84  
**Gauge** 18G - 36G  
**Frame** M frame single bed for high speed operation  
**Lubricator** Uniwave LF oiler  
**Dial Cams** 4-position (K, T, W, S) needle selection with 2-race RDS cams

**Cylinder Cams** Semi closed cams 3-position (K, T, W) needle selection with S.S. actuators  
**Yarn Carriers** Individual block type yarn carriers with a corner hole  
**Take Up** Act-7 Servo-motor controlled friction roll system (Maximum fabric roll diameter 580mm)

**Size Ring** Light weight Cadra-tex spreader  
**Yarn Feed Device** 1 U/F MPF 20P1 LGL E compact  
**Auxiliary Equipment** FMC-50 (memory: 16MW), operation panel FCP-60, (built in USB connector), cooling fans (for the cylinder actuators)

## Optional Extras

- Large take-up on high legs (Maximum fabric roll diameter 850mm or 1000mm)
- Advanced closing, synchronised timing cams for elastomeric yarn
- MEMMINGER-IRO Pulsonic oiler
- Cylinder/dial change tool
- LGL compact Attivo yarn feeding units

## Fabric Potential

- Standard: Full jacquard with 3-position needle selection in cylinder
- Optional: Mattress ticking fabrics, elastomeric yarn plating

## Special Features

- FMC-50 controller - Newly developed controller supports high speed operation and multi-feeders and demonstrates stabilised needle selection performance
- ACT-7 motor-driven automatic take-up - Reduced weight and improved maintainability
- Operation panel fitted with colour LCD touch panel (FCP-60) - High-luminance and clear colour, allows for precise operation and clear confirmation of machine information.