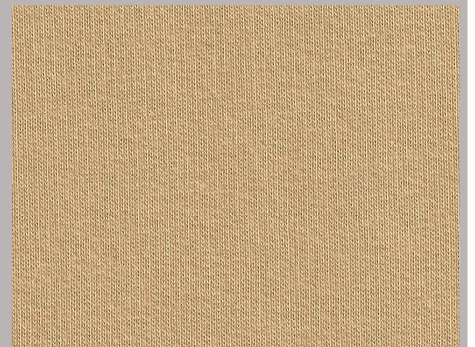
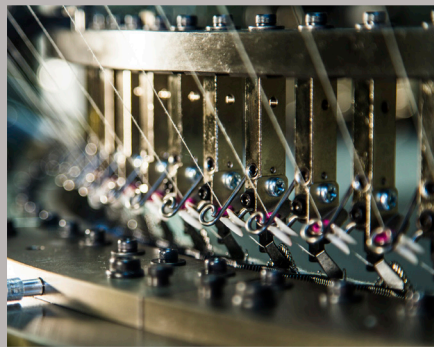


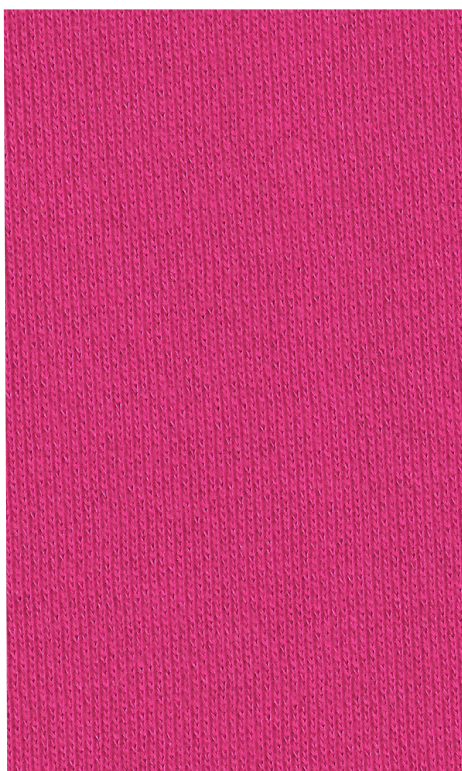
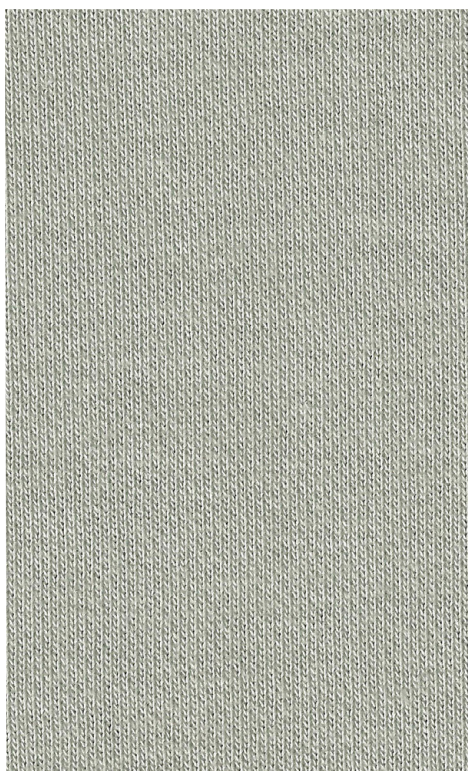
**MX-
S3.2DFDRE**

**SINGLE KNIT
MACHINE**



HIGH SPEED DOUBLE FLEECE MACHINE.





Standard Specifications

Diameter 26" 30" 32" 34" 36"

No of Feeds 84, 96, 104, 108, 116

Gauge 20G - 28G

Frame MXC frame - single bed for high speed operation

Yarn Feed Device MPF20-L1 (1 Unit/F) positive yarn feeder on 2 rings/ 3 tapes

Cylinder Cams 3 race closed cam system

Sinker Cams Double push type, segmented sinker cap with adjust nuts

Lubricator Projectile LF

Take-up ACT -7 servo motorised friction roll system (Maximum roll diameter 580mm)

Size Ring Light weight Cad-ratex fabric spreader

Drive AC Inverter with 5.5KW motor

Auxiliary Equipment

- FCP-60 machine control panel
- Flutter blower with speed control
- Tape cleaning blower

Fabric Potential

- 1x1 fleece, 2 x1 Twill fleece, 3 x1 Fleece (3 race)
- With optional parts: Pique fleece, Mesh fleece, 3x1 Twill fleece, (4 race), Elastomeric yarn plated double fleece

Special Features

- Fine plating double fleece knit machine
- Quick conversion to knit fabrics other than double fleece
- ACT-7 servo motor-driven auto take-up unit installed
- Cleaner appearance of inlay loops compared to conventional double fleece machines
- Equipped for MMS monitoring

Optional Extras

- Overhead bobbin rack
- Large take-up on high legs (Maximum fabric roll diameter 850mm)
- Additional cams and needles for 4-race
- Parts for elastomeric yarn plating
- Parts for pique fleece
- Parts for mesh fleece
- Yarn length meter
- Normal Cadratex fabric spreader
- Memminger-IRO pulsonic oiler
- Auto-oiler
- Lint fans
- Two door specification

Monarch Knitting Machinery UK Ltd, Boston Road, Beaumont Leys, Leicester LE4 1BG, England
Tel: (0116) 235 1502. Fax: (0116) 236 7201 Email: general@monarchknitting.co.uk

www.monarchknitting.co.uk

*The above specification may be changed without notice. *Conditions of sales may vary from country to country.* All information in this brochure is given in good faith but without warranty.