

PLAIN ~ TERRY

TRUE RIB



# BUSI J TERRY

OVER 60-YEAR  
EXPERIENCE

MANUFACTURING SIMPLY UNIQUE  
SOCK-KNITTING MACHINES



100%  
designed &  
manufactured  
in Italy

[www.busigiovanni.com](http://www.busigiovanni.com)



## FEATURES

**BUSI J TERRY** is a high production single cylinder sock machine provided with latch needles in the dial and with a device for the selection of the terry loops to enable it to produce socks for men and children with true rib and selected terry. The machine is provided with full electronic control. The terry device enables the fully automatic switching from plain stitch to half terry and to full terry. It is also optionally available a terry device that enables the machine knitting the sandwich terry and the normal terry even in the same sock without any mechanical change. The machine is available in two versions, **BUSI J TERRY** and **BUSI J TERRY S**. The features of the two versions are listed in the table below.

## TEXTILE POSSIBILITIES

- 1x1 true rib welt
- Double welt
- Embroidery pattern 6 colors per course plus the ground
- Embroidery pattern on a mock rib base 5 colors per course plus the ground
- Embroidery pattern on a mesh base 5 colors per course plus the ground
- Mesh pattern in two feeds Option
- Two colour jacquard patterns on a flat knit base 2 colors per course + 5 embroidery colors
- 1x1, 3x1, 5x1 ecc.. true rib fabric
- Selected terry with additional embroidery pattern 5 colors per course plus the ground
- 3D article Option

## TECHNICAL FEATURES

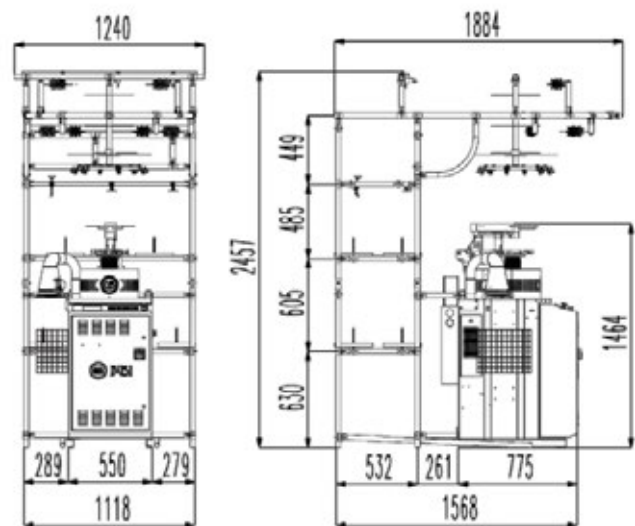
- Two feeds (also available with one feed only, in the version "S")
- Stitch adjustment by step motors
- Automatic stiffening on each step motor
- Cylinder motion by brushless motor
- Possibility to store several articles in memory
- Possibility to run a sequence of up to 4 different articles.
- Possibility to modify the programs and/or the machine parameters during knitting
- Programs are loaded through a USB stick or through the network
- UPS power backup system
- Photocell dropout control
- Automatic lubrication
- All shafts work on roller bearings
- RIMAGLIO device for the Classic Linking
- Universal sinker cap for conventional/sandwich terry
- Clamp for bare lycra
- Device for the second elastic yarn
- Device for footie sock
- Device for the 3D sock
- Kit for pattern in heel and toe
- Storage feeders
- Positive yarn feeders mod. ULTRAFEEDER (BTSR)
- BTSR yarn flow sensors
- Anti-twist device
- Suction fan
- Vertical or horizontal yarn rack
- Ethernet network connection (wired or wireless)
- Production monitoring programme BUSI CONTROL TOWER
- Pattern and article development programme (ART-GEN)

## TECHNICAL DATA

- Diameters: 3 1/4", 3 1/2", 3 3/4", 4", 4 1/2"
- Needles: 84 - 240
- Available gauges: 24, 36, 48, 54
- Max. mechanical speed: 250 rpm
- Speed in heels: 200 courses pm
- Weight 420 kg
- Technical dimensions cm 125 x 155 x 245
- Technical dimensions (+ Rimaglio) cm 135 x 155 x 275

3 1/4"	84	136
3 1/2"	96	200

3 3/4"	96	220
4"	84	240
4 1/2"	84	200



All liability deriving from the improper use of the machines advertised and marketed by Busi Giovanni S.r.l. is excluded; this also refers to third party intellectual property rights. The features described in this leaflet are just indicative and they might be changed without prior notice.