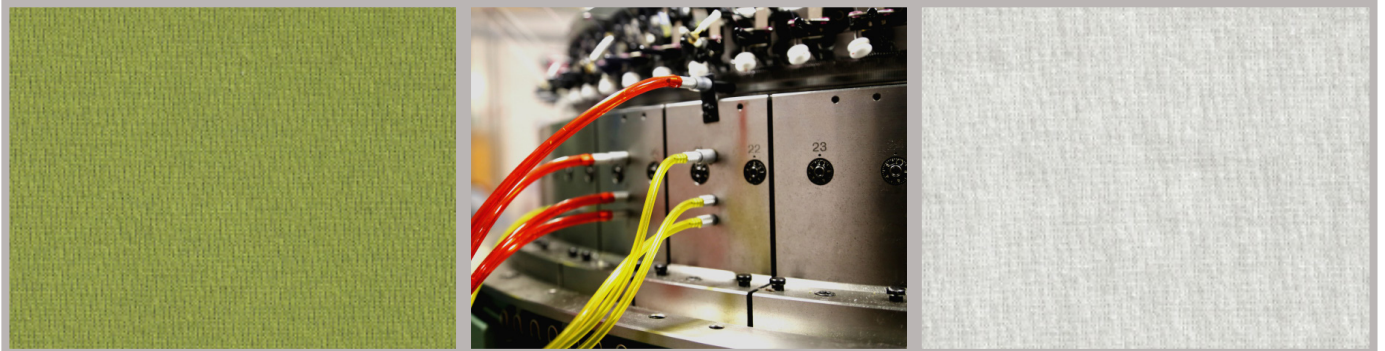


M-8ER

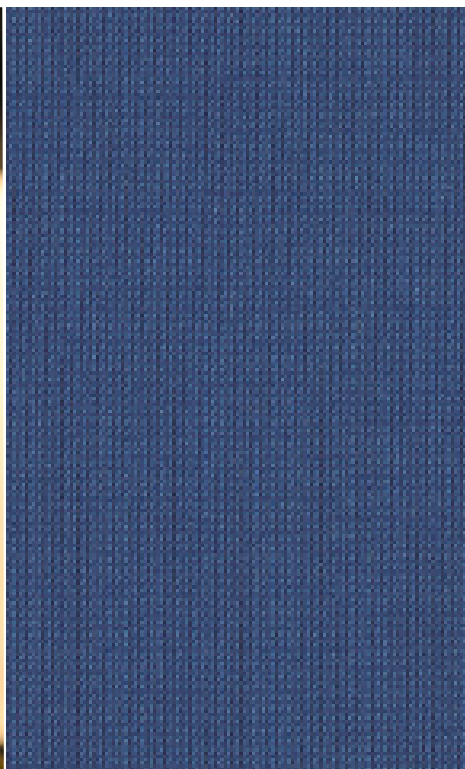
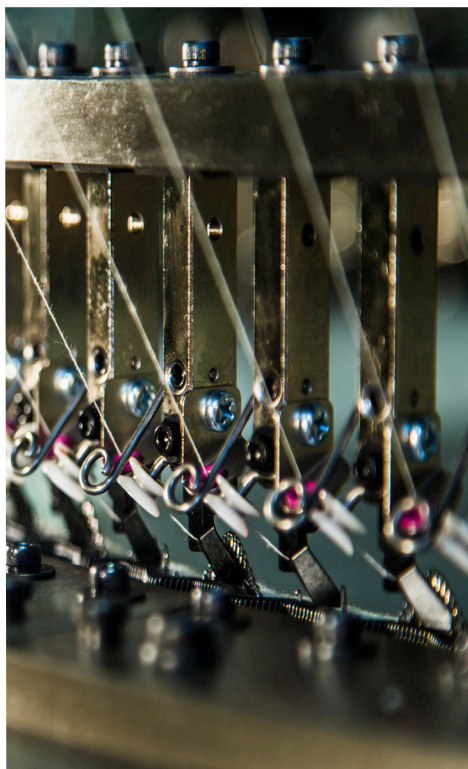
**DOUBLE-KNIT
MACHINE**



**DOUBLE KNIT EIGHTLOCK MACHINE CAPABLE OF
EFFICIENTLY KNITTING QUALITY EIGHTLOCK RIB
FABRIC AT HIGH SPEEDS.**



monarch



Standard Specifications

Diameter 30" 33" 34" 36" 38"

No of feeds 56, 60, 60, 60, 64

Gauge 12G -18G (Rib specification), 20G - 40G (Interlock specification)

Frame M type high speed single bed frame, quick change dial/ cylinder facility

Lubricator Projectile 419

Cylinder Cams 3 positions (K, T, W) exchange closed cams with individual raising/ stitch cams

Dial Cams 3 position (K, T, W) exchange closed cams with individual raising/ stitch cams

Drive AC inverter with 3.7Kw motor for 30"- 33" 5.5Kw motor for 34"-38"

Yarn Feeder MPF20L1 on 4 tapes

Take-up ACT-7 servo motor controlled friction roll system (Maximum fabric roll diameter 580mm)

Auxiliary Equipment FCP-60 (4.3 inch, colour LCD touch panel) Double handle specification

Fabric Potential

1x1, 2x2 Rib Structures, Tuck Rib Structures, basic Eightlock Interlock, Double Pique, Single Pique, Ponte de Roma, Mock Rodier, Reversible, Milano Rib, all on 2 race cylinder, small pattern in colours, blister, on 4 race cylinder

Special Features

- Mounted on the newly developed "M" frame
- Quick change dial/cylinder facility
- Dials & cylinders in this machine series are common with the ones for "M-7" series. Users can exchange dials and cylinders freely between the 2 series
- Convertibility between the 2 models in this "M-8" series

Optional Extras

- Extra cams (K, T, W) for cylinder and dial in rib specification (12G -18G)
- Extra 2 races of cams for cylinder and dial (for Interlock Eightlock specification knit, tuck & welt cams available)
- Parts for brushed interlock
- Parts for elastomeric plating
- Conversion parts to convert model M-8ME Eightlock
- Dial 4 race (dial cam holder assembly, needle dial type-4 for 32G and course gauge machines)
- Conversion parts to convert model M-8ME Eightlock